

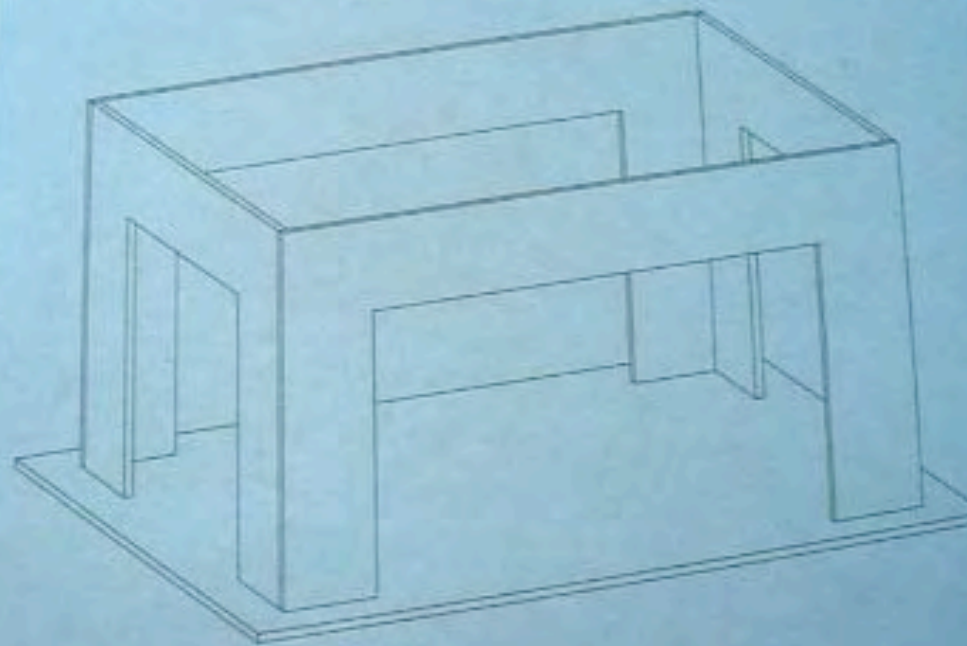
Building the Model Box for the Weiss Stage

Remember to use black foam-core

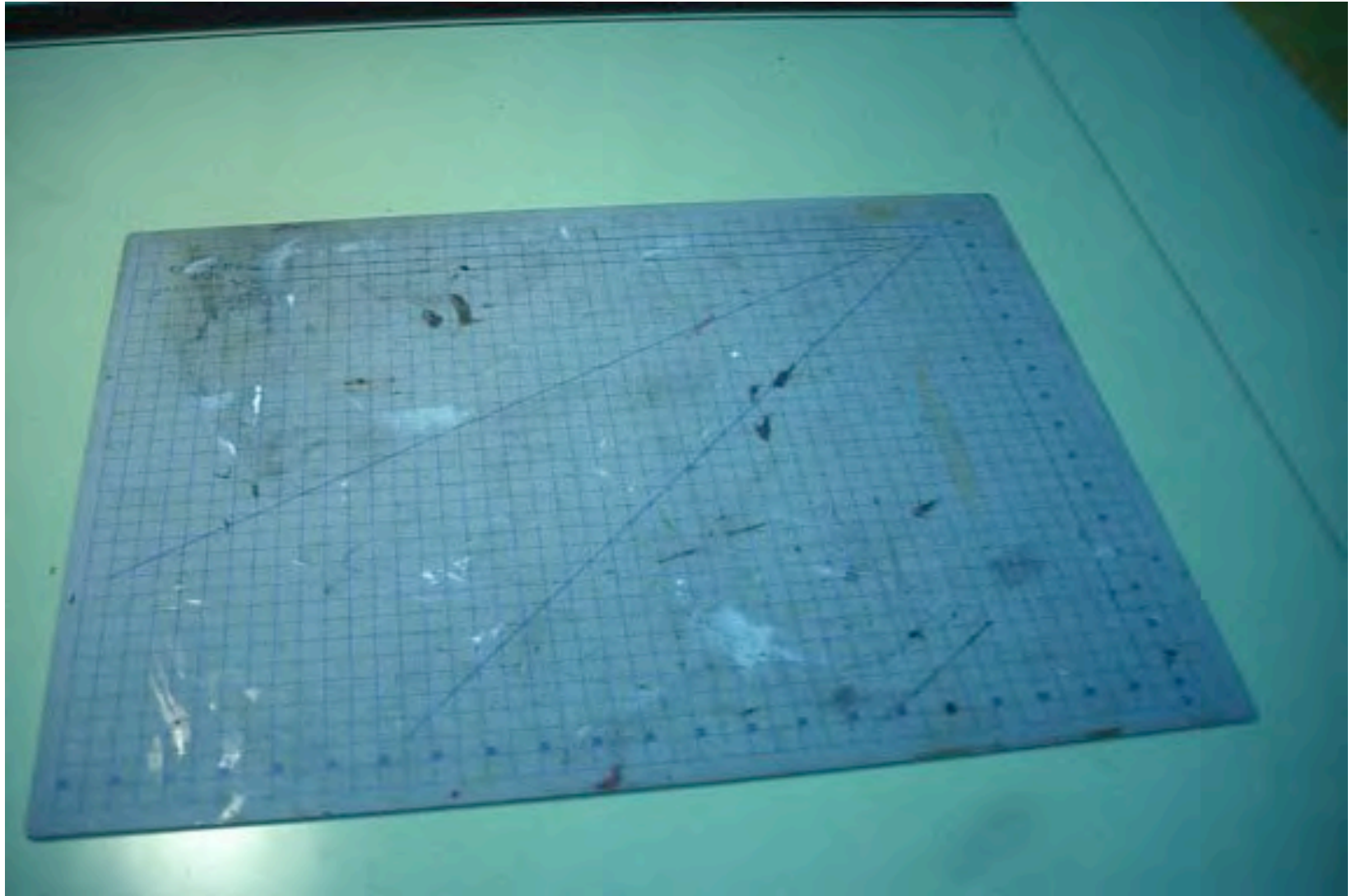
And glue for that matter...

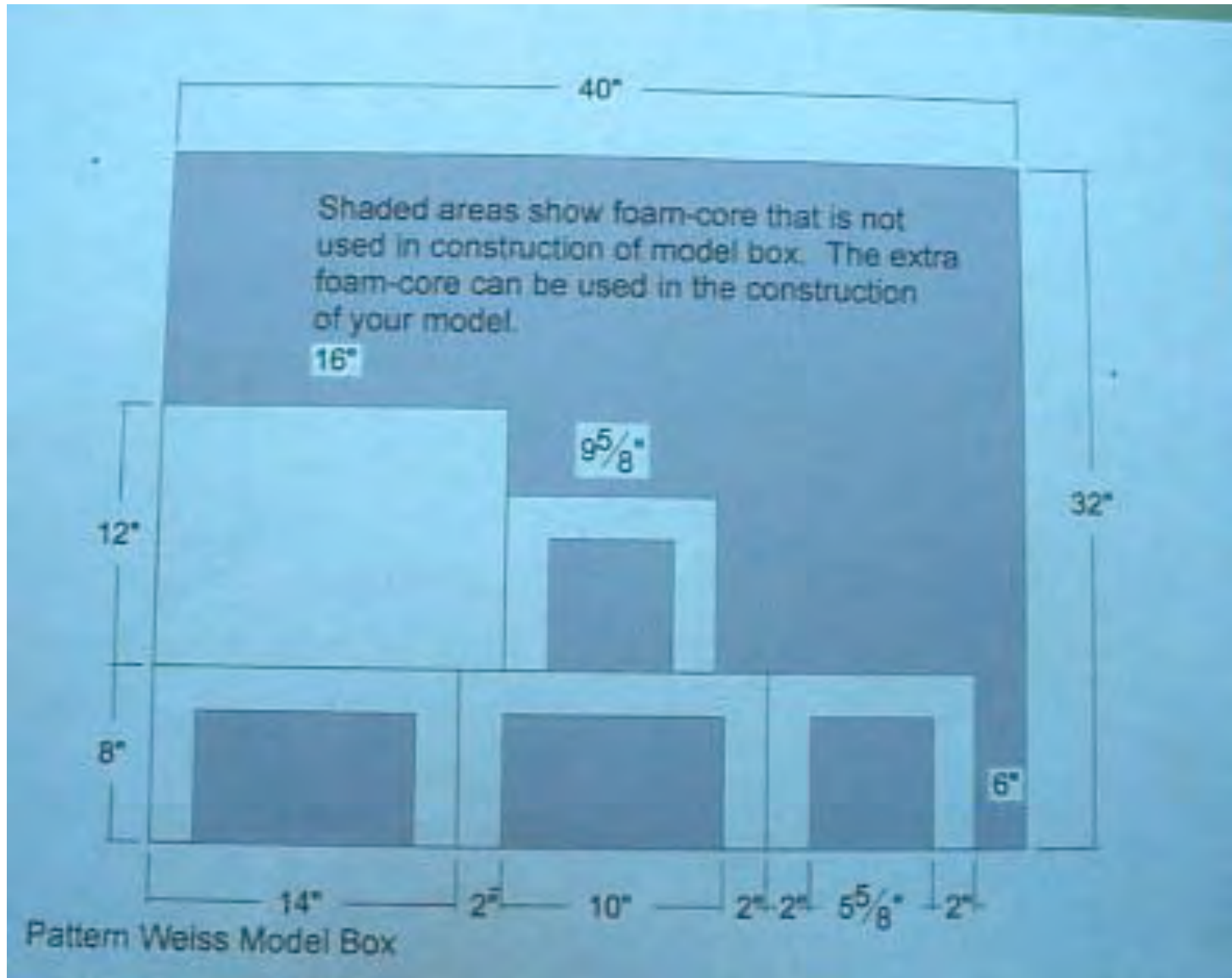
List of Materials you will need
for building the model
box(you can refer to the info.
packet for these)

- Foam core
- X-acto knife
- Glue
- Straight Pins
- Tape
- Cutting surface

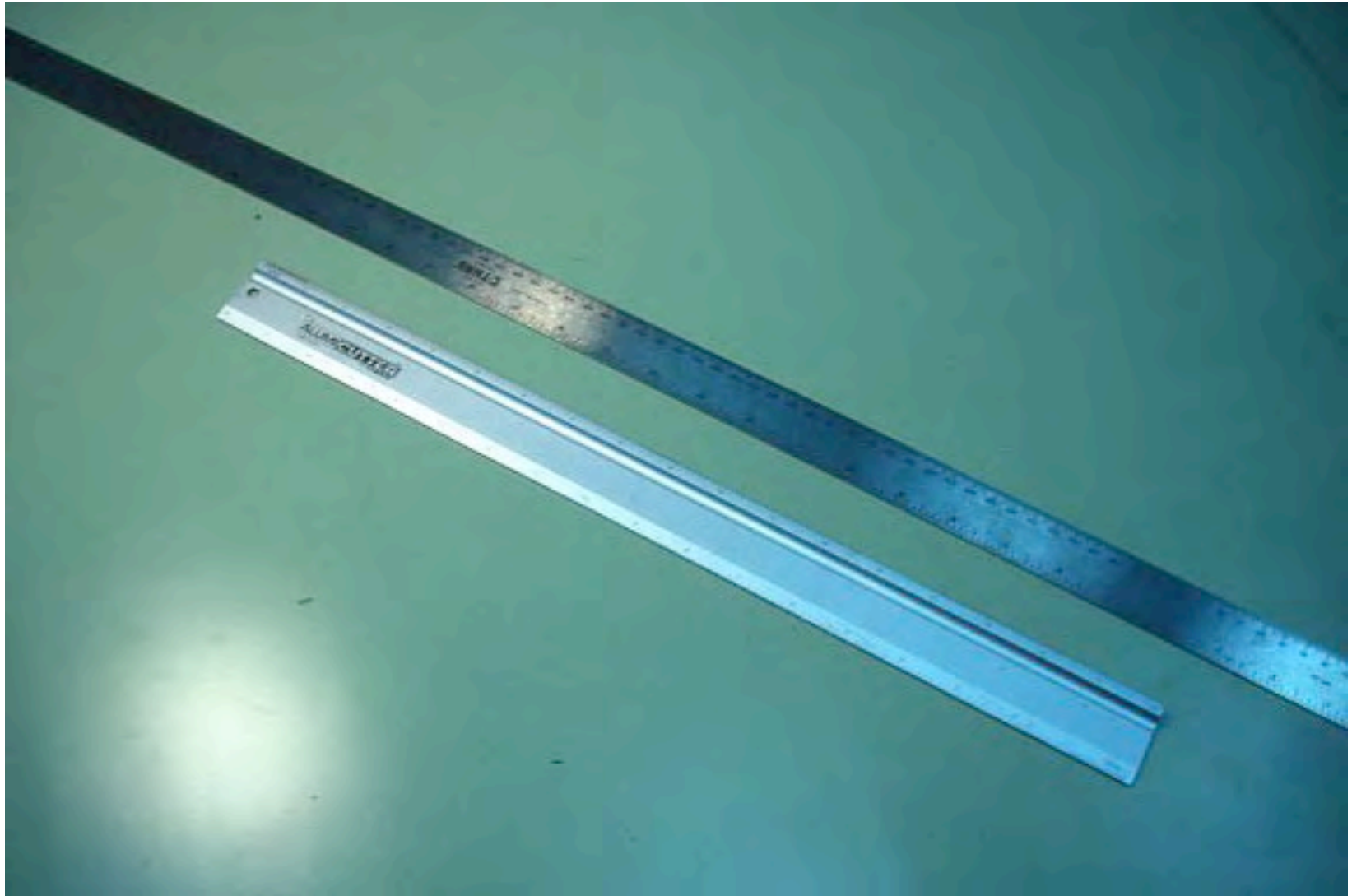


Weiss Model Box - This is what the box looks like after being assembled



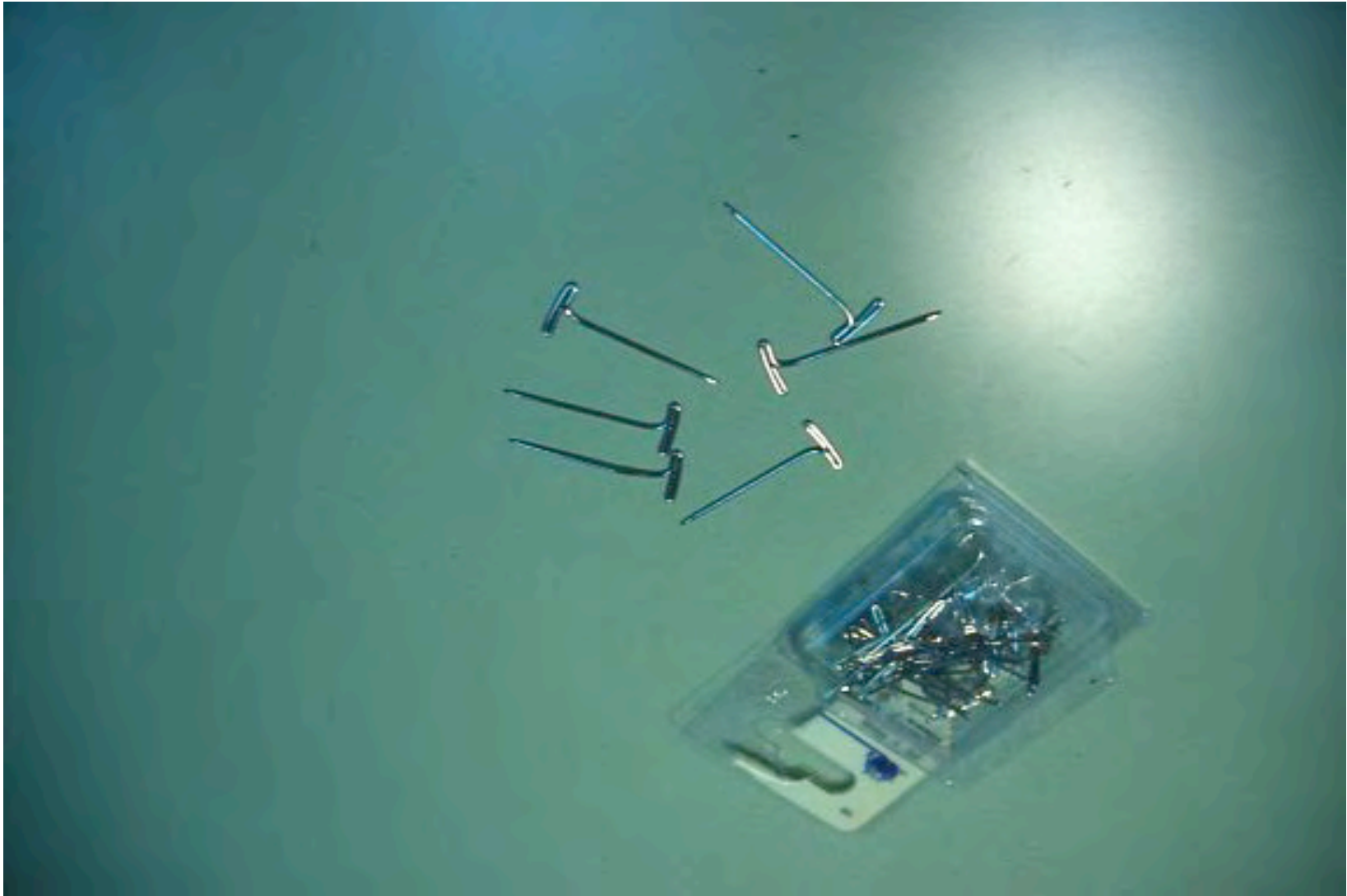


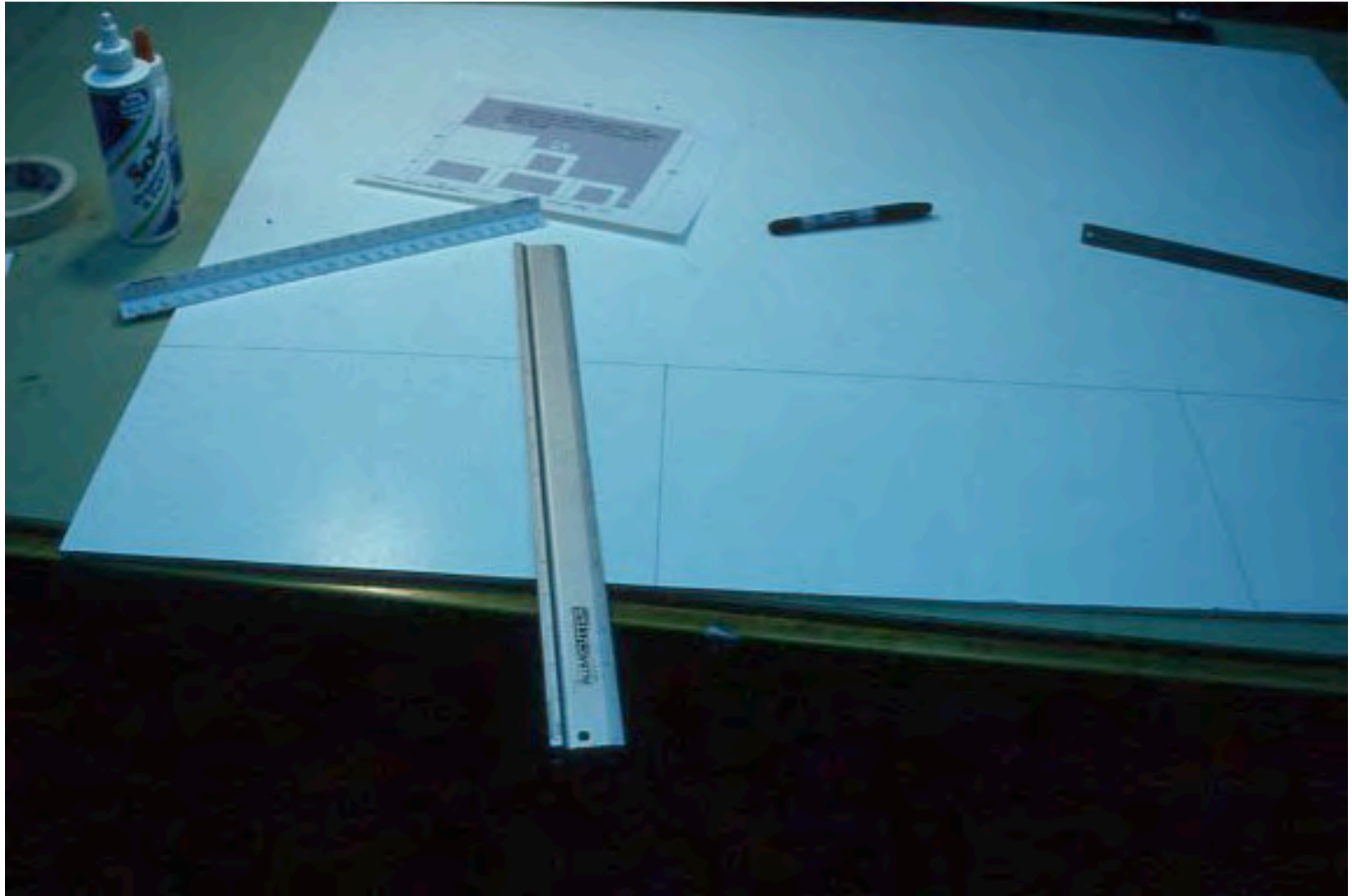


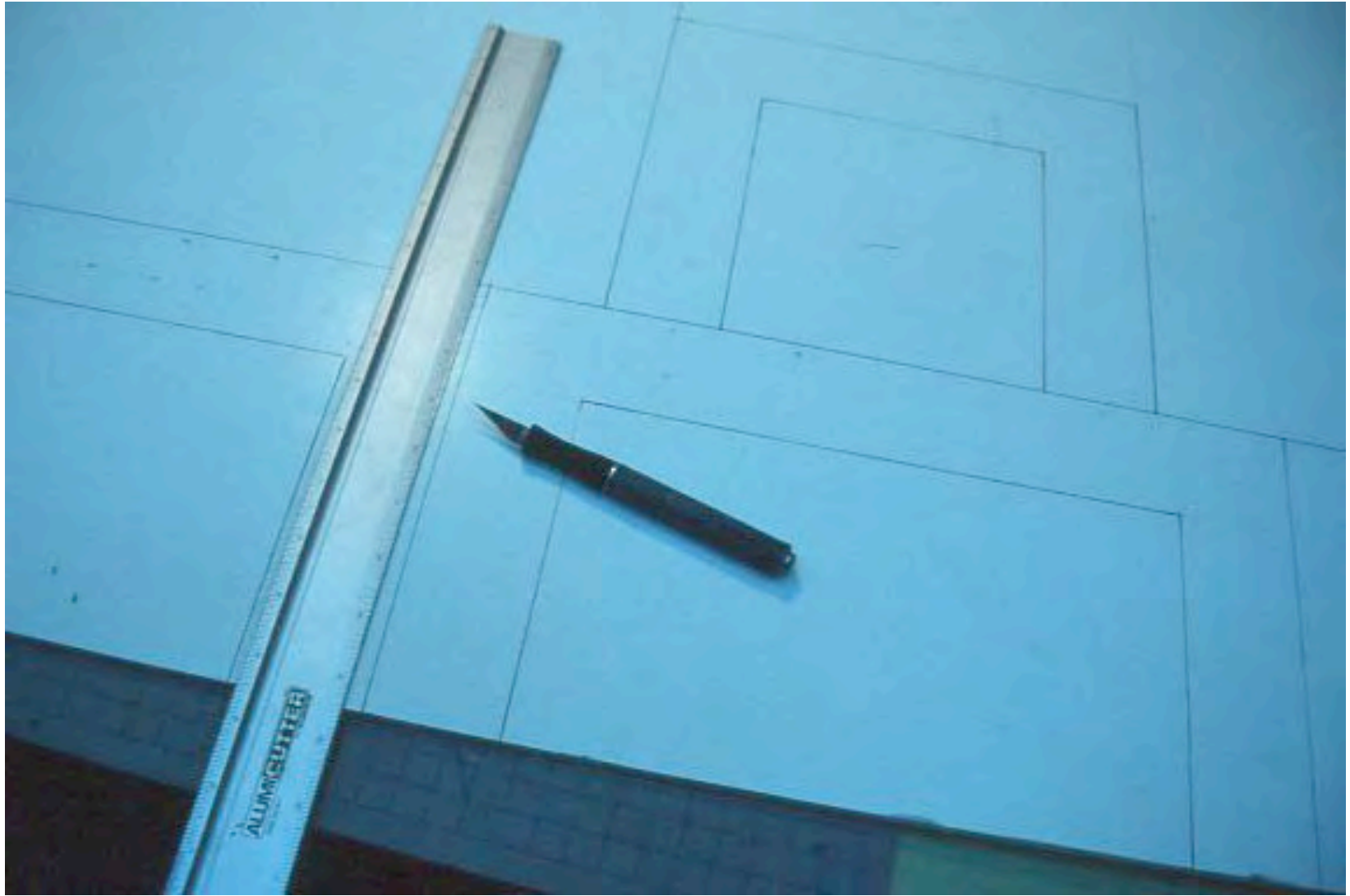




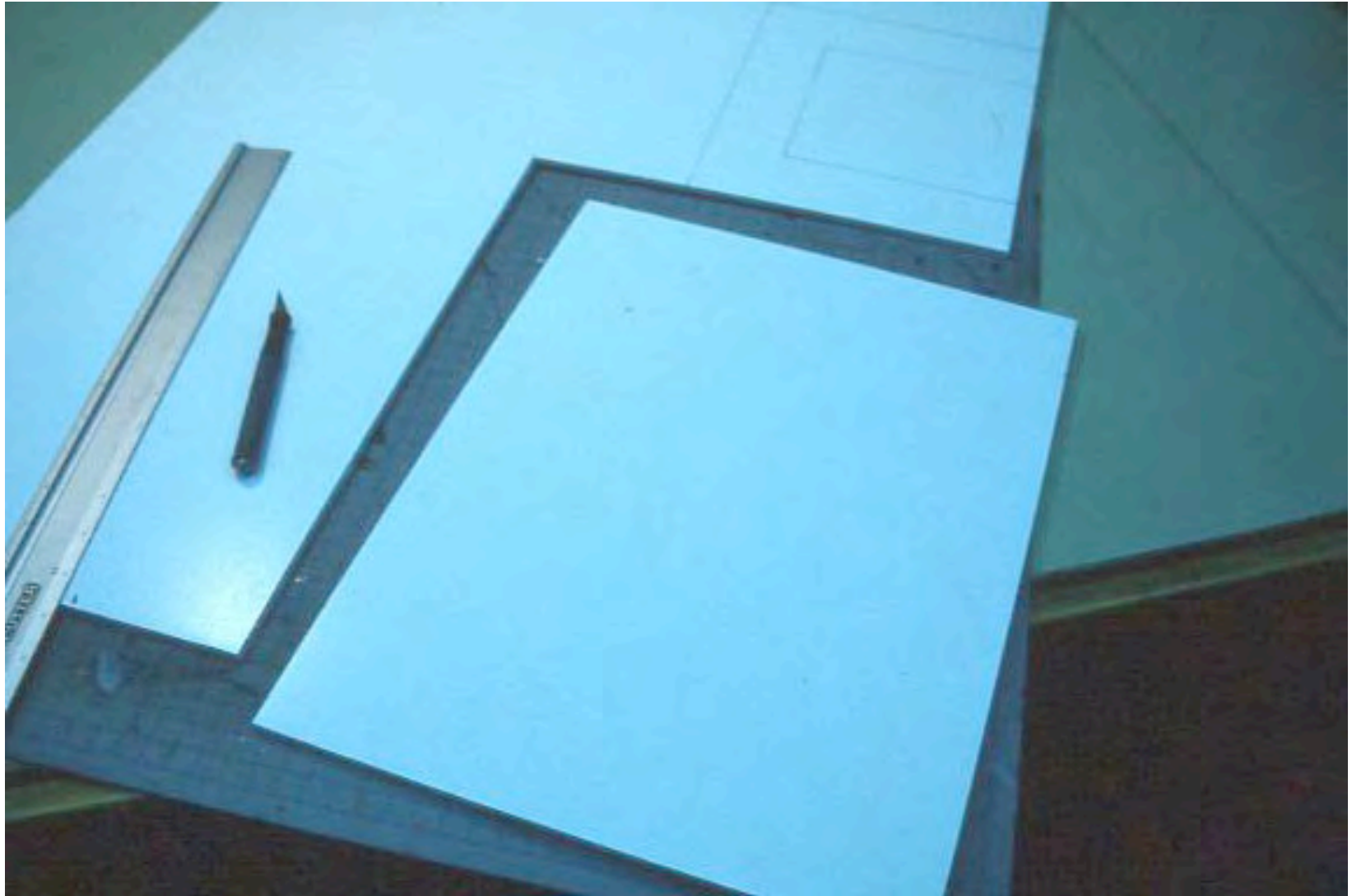


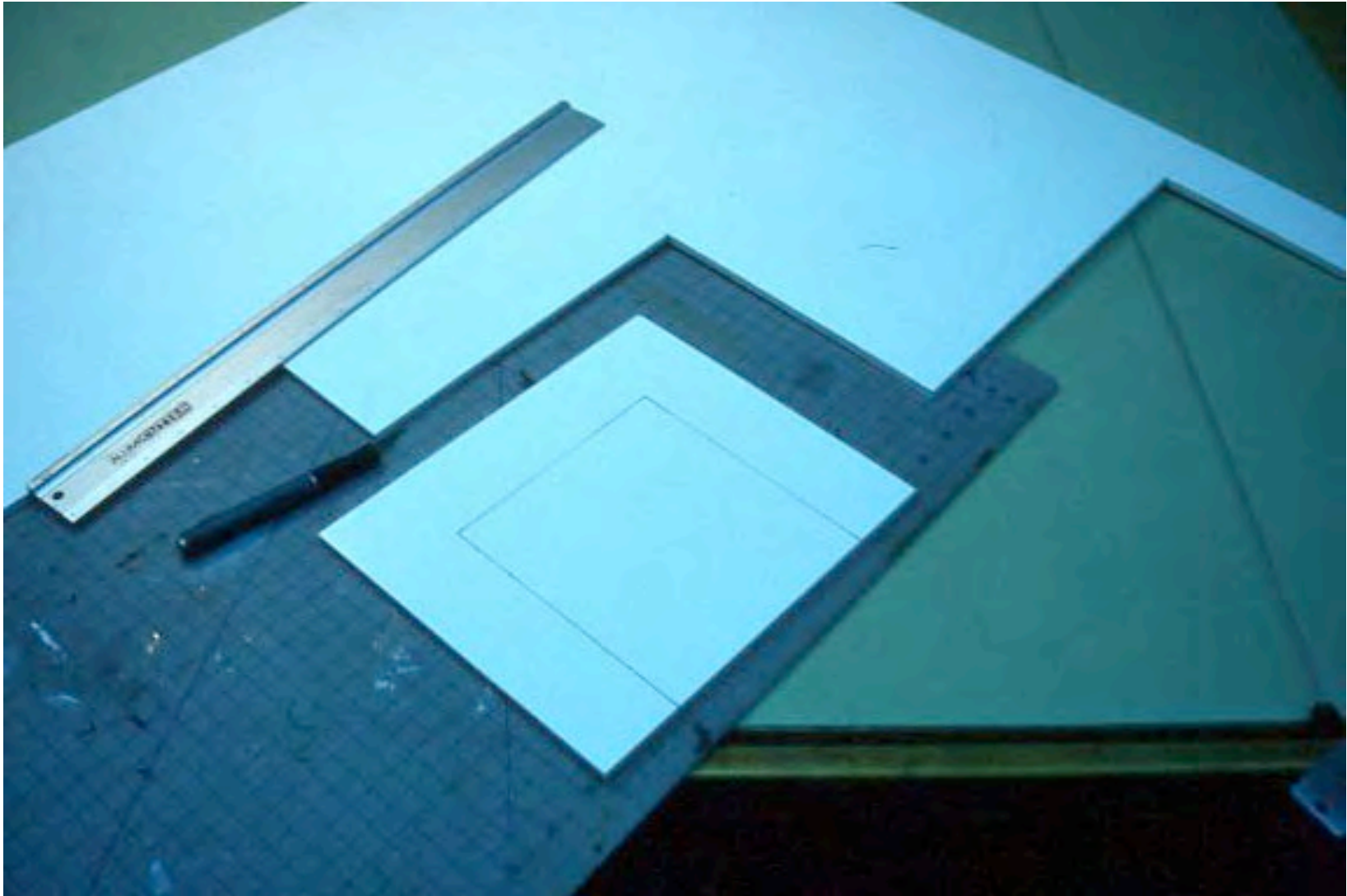


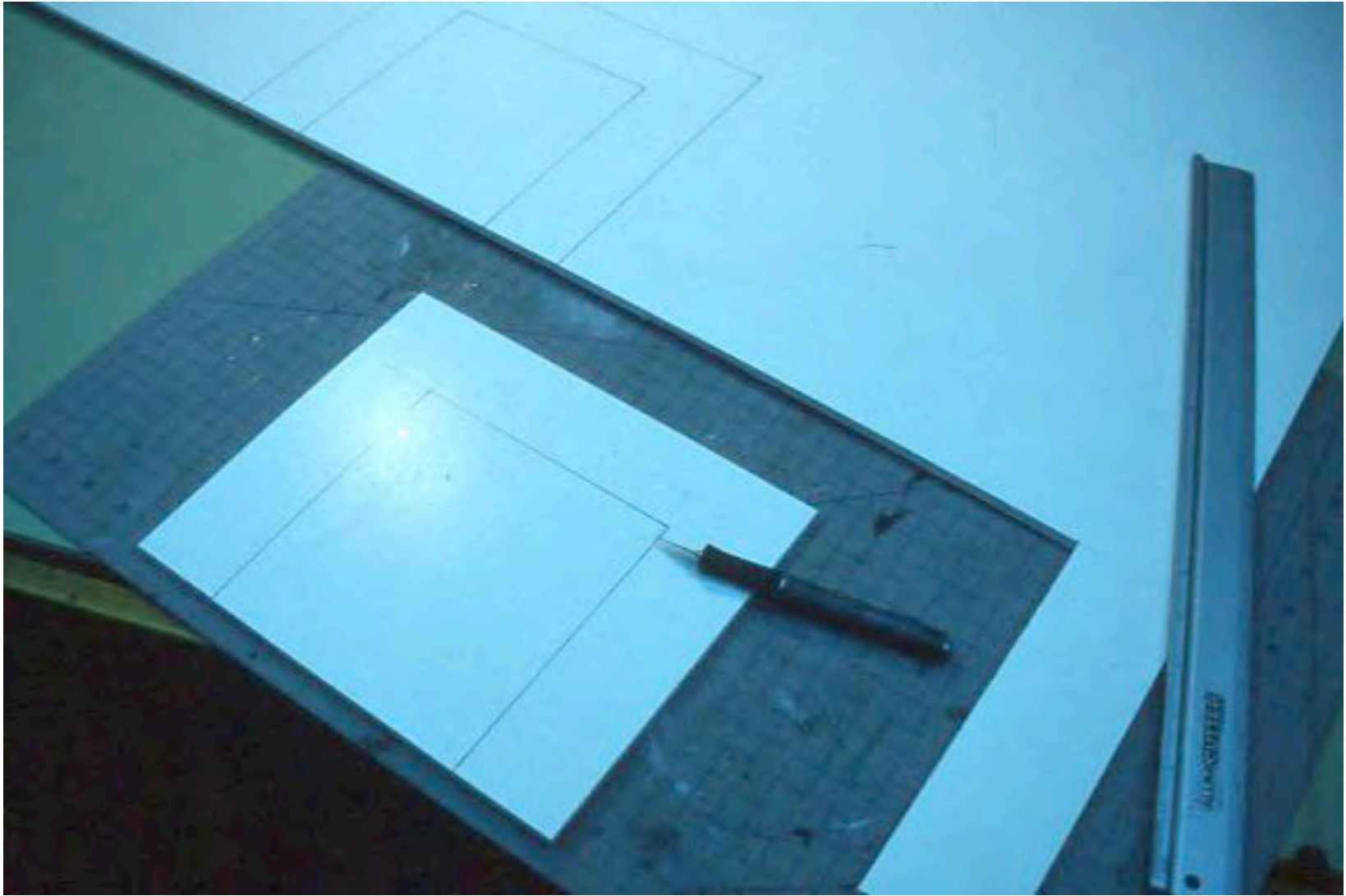












LEFT OVER
FOAM CORE

